



Curious Collection®: Metallics

Curious Metallics a collection of colored papers with a natural wove surface enhanced by subtle but stunning metallic shimmer.

The entire curious collection ranges: metallics, translucents, matter and SKIN are FSC certified. ArjoWiggins supports environmentally appropriate, socially beneficial and economically viable forestry management.

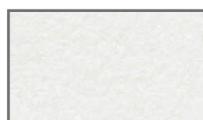


FSC
Certified

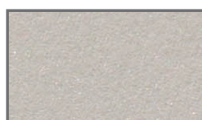
COLOR	SIZES	WEIGHTS (GSM)
Cryogen White	27 1/2" x 39 3/8"	120, 240
Ice Silver	27 1/2" x 39 3/8"	120, 300
Luster	27 1/2" x 39 3/8"	120, 240
Virtual Pearl	27 1/2" x 39 3/8"	120, 240
Ice Gold	27 1/2" x 39 3/8"	120, 240
White Gold	27 1/2" x 39 3/8"	120, 240
Gold Leaf	27 1/2" x 39 3/8"	120, 240
Lime	27 1/2" x 39 3/8"	120, 300
Mandarin	27 1/2" x 39 3/8"	120, 300
Super Gold	27 1/2" x 39 3/8"	120, 240
Red Lacquer	27 1/2" x 39 3/8"	120, 240
Violette	27 1/2" x 39 3/8"	120, 300
Blueprint	27 1/2" x 39 3/8"	120, 300
Shadow	27 1/2" x 39 3/8"	120, 240
Chocolate	27 1/2" x 39 3/8"	120, 240
Nude	27 1/2" x 39 3/8"	120, 240
Rose Gold	27 1/2" x 39 3/8"	120, 300
Chesnut	27 1/2" x 39 3/8"	120, 300
Peacock	27 1/2" x 39 3/8"	120, 300
Iceberg	27 1/2" x 39 3/8"	120, 300
Electric Blue	27 1/2" x 39 3/8"	120, 300



Cryogen White



Ice Silver



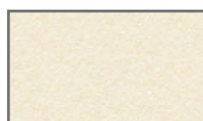
Luster



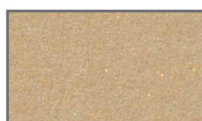
Virtual Pearl



Ice Gold



White Gold



Gold Leaf



Lime



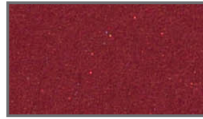
Curious Collection®: Metallics



Mandarin



Super Gold



Red Lacquer



Violette



Blueprint



Shadow



Chocolate



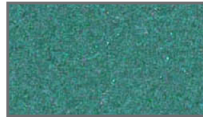
Nude



Rose Gold



Chesnut



Peacock



Iceberg



Electric Blue



Curious Collection®: Matter

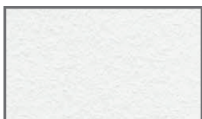
Curious Matter Suitable for all major printing processes, including offset lithography, letterpress, silk-screening, embossing, die-stamping, thermography and flexography. This unique paper is particularly suitable for creasing, folding and envelope conversion. We recommend that you use fully oxidizing inks. All translucent papers are sensitive to humidity change.

The entire curious collection ranges: metallics, translucent, matter and SKIN are FSC certified. ArjoWiggins supports environmentally appropriate, socially beneficial and economically viable forestry management.

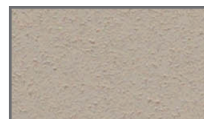


FSC
Certified

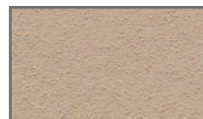
COLOR	SIZES	WEIGHTS (GSM)
Goya White	27 1/2" x 39 3/8"	135, 270
Andina Grey	27 1/2" x 39 3/8"	135, 270
Ibizenca Sand	27 1/2" x 39 3/8"	135, 270
Desiree Red	27 1/2" x 39 3/8"	135, 270
Purple Majesty	27 1/2" x 39 3/8"	135, 270
Adiron Blue	27 1/2" x 39 3/8"	135, 270
Black Truffle	27 1/2" x 39 3/8"	135, 270



Goya White



Andina Grey



Ibizenca Sand



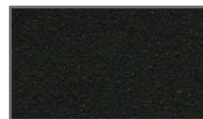
Desiree Red



Purple Majesty



Adiron Blue



Black Truffle



Curious Collection : Translucent

Curious Translucent suitable for all major printing processes, including offset lithography, letterpress, silk-screening, embossing, die-stamping, thermography and flexography. This unique paper is particularly suitable for creasing, folding and envelope conversion. We recommend that you use fully oxidizing inks. All translucent papers are sensitive to humidity change

The entire curious collection ranges: metallics, translucents, matter and SKIN are FSC certified. ArjoWiggins supports environmentally appropriate, socially beneficial and economically viable forestry management.

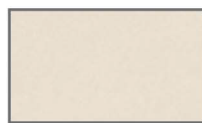


FSC Certified

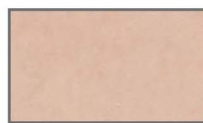
COLOR	SIZES	WEIGHTS (GSM)
Bright White	27 1/2" x 39 3/8"	100
Pearl Iridescent	27 1/2" x 39 3/8"	100, 200
Nude	27 1/2" x 39 3/8"	100
Gold Iridescent	27 1/2" x 39 3/8"	200
Sunflower	27 1/2" x 39 3/8"	100
Spring	27 1/2" x 39 3/8"	100
Emerald	27 1/2" x 39 3/8"	100
Red Lacquer	27 1/2" x 39 3/8"	100
Violette	27 1/2" x 39 3/8"	100
Steel	27 1/2" x 39 3/8"	100
Chocolate	27 1/2" x 39 3/8"	100
Sand	27 1/2" x 39 3/8"	200
Silver	27 1/2" x 39 3/8"	200
Clear	27 1/2" x 39 3/8", 25 1/8" x 25 3/8"	82, 102, 112, 140, 180



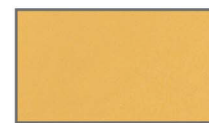
Bright White



Pearl Iridescent



Nude



Gold Iridescent



Sunflower



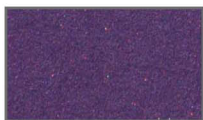
Spring



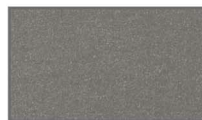
Emerald



Red Lacquer



Violette



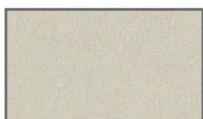
Steel



Chocolate



Sand



Silver



Clear