



Conqueror : Wove Watermarked

Produced to exacting standards since 1888, Conqueror's range of everyday essentials, available in whites, creams and now a suite of greys, are a staple of brand identities worldwide.

Wove

Conqueror Wove couples superb, high-contrast matt printing performance with the warm touch of an authentic wove. The three new shades of grey complement the existing range of whites, creams and black.

Applications:

The whole range of Conqueror papers, text and boards give excellent printing results with all major print processes. These include: Design and pre-press, Offset litho printing, Printing inks, Paper handling, Sealers and coatings, Varnishing, Screen printing, Blind embossing, Hot foil stamping, Die Stamping, Thermography, Film laminating, Die and laser cutting, Folding and creasing, Binding and adhesives, Office printing, Digital technologies,

Conqueror and the Environment

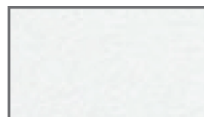
Respect for the environment is at the heart of Conqueror's brand integrity. The entire Conqueror range is FSC Certified. The Forest Stewardship Council (FSC) is an independent organization that monitors the responsible management of the world's forests via a system of certification and chain of custody accreditations.



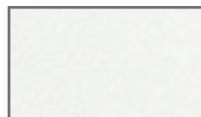
COLOR	SIZES	WEIGHTS (GSM)
Wove Watermarked		
Diamond White	(SRA2) 17 3/4" x 25 1/4"	90, 100
Ultra White	8 1/2" x 11" & 8 1/2" x 11", (SRA2) 17 3/4" x 25 1/4"	90, 100
High White	(SRA2) 17 3/4" x 25 1/4"	90, 100
Ivory	8 1/2" x 11" & 8 1/2" x 11", (SRA2) 17 3/4" x 25 1/4", 34" x 22"	90
Oyster	8 1/2" x 11" & 8 1/2" x 11", (SRA2) 17 3/4" x 25 1/4", 34" x 22"	90
Pearl	(B1) 27 1/2" X 39 3/8"	100
Concrete	(B1) 27 1/2" X 39 3/8"	100



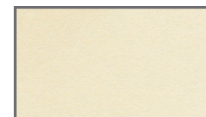
Diamond White



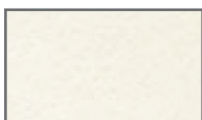
Ultra White



High White



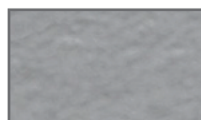
Ivory



Oyster



Pearl



Concrete



Conqueror : Wove Unwatermarked

Produced to exacting standards since 1888, Conqueror's range of everyday essentials, available in whites, creams and now a suite of greys, are a staple of brand identities worldwide.

Wove

Conqueror Wove couples superb, high-contrast matt printing performance with the warm touch of an authentic wove. The three new shades of grey complement the existing range of whites, creams and black.

Applications:

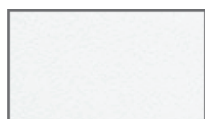
The whole range of Conqueror papers, text and boards give excellent printing results with all major print processes. These include: Design and pre-press, Offset litho printing, Printing inks, Paper handling, Sealers and coatings, Varnishing, Screen printing, Blind embossing, Hot foil stamping, Die Stamping, Thermography, Film laminating, Die and laser cutting, Folding and creasing, Binding and adhesives, Office printing, Digital technologies,

Conqueror and the Environment

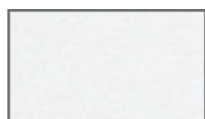
Respect for the environment is at the heart of Conqueror's brand integrity. The entire Conqueror range is FSC Certified. The Forest Stewardship Council (FSC) is an independent organization that monitors the responsible management of the world's forests via a system of certification and chain of custody accreditations.



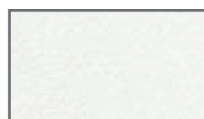
COLOR	SIZES	WEIGHTS (GSM)
Wove Unwatermarked		
Ultra White (Unwatermarked)	(SRA2) 17 3/4" x 25 1/4"	120
High White (Unwatermarked)	(SRA2) 17 3/4" x 25 1/4"	120
Ivory (Unwatermarked)	(B1) 27 1/2" X 39 3/8"	120
Oyster (Unwatermarked)	(SRA2) 17 3/4" x 25 1/4"	120
Concrete (Unwatermarked)	(B1) 27 1/2" X 39 3/8"	120
Wove Board		
Diamond White	(B1) 27 1/2" X 39 3/8"	180
Ultra White	(B1) 27 1/2" X 39 3/8"	220, 300
High White	(B1) 27 1/2" X 39 3/8"	220
Ivory	(B1) 27 1/2" X 39 3/8"	220, 300
Ivory Envelope	(#10) 4 1/8" x 9 1/2"	90
Oyster	(B1) 27 1/2" X 39 3/8"	220
Oyster Envelope	(#10) 4 1/8" x 9 1/2"	90
Pearl	(B1) 27 1/2" X 39 3/8"	300
Concrete	(B1) 27 1/2" X 39 3/8"	300



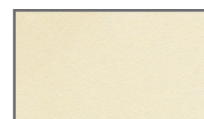
Diamond White



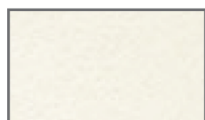
Ultra White



High White



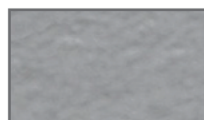
Ivory



Oyster



Pearl



Concrete



Conqueror : CX22 watermarked

Produced to exacting standards since 1888, Conqueror's range of everyday essentials, available in whites, creams and now a suite of greys, are a staple of brand identities worldwide.

CX22

Ultra-smooth and lustrous, Conqueror CX22's low-friction surface produces a high-definition print result.

Applications:

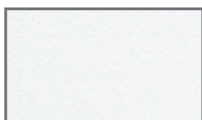
The whole range of Conqueror papers, text and boards give excellent printing results with all major print processes. These include: Design and pre-press, Offset litho printing, Printing inks, Paper handling, Sealers and coatings, Varnishing, Screen printing, Blind embossing, Hot foil stamping, Die Stamping, Thermography, Film laminating, Die and laser cutting, Folding and creasing, Binding and adhesives, Office printing, Digital technologies,

Conqueror and the Environment

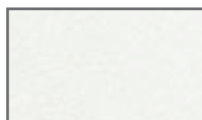
Respect for the environment is at the heart of Conqueror's brand integrity. The entire Conqueror range is FSC Certified. The Forest Stewardship Council (FSC) is an independent organization that monitors the responsible management of the world's forests via a system of certification and chain of custody accreditations.



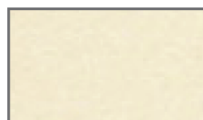
COLOR	SIZES	WEIGHTS (GSM)
CX22 Watermarked		
Diamond White (Watermarked)	8 1/2" x 11" & 8 1/2" x 13", 34" x 22", (A4) 210 mm x 297mm , (SRA2) 17 3/4" x 25 1/4"	90
High White (Watermarked)	(SRA2) 17 3/4" x 25 1/4"	100
Cream (Watermarked)	(SRA2) 17 3/4" x 25 1/4"	100
Ultra White (Watermarked)	(SRA2) 17 3/4" x 25 1/4"	100



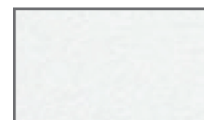
Diamond White



High White



Cream



Ultra White



Conqueror : CX22 unwatermarked

Produced to exacting standards since 1888, Conqueror's range of everyday essentials, available in whites, creams and now a suite of greys, are a staple of brand identities worldwide.

CX22

Ultra-smooth and lustrous, Conqueror CX22's low-friction surface produces a high-definition print result.

Applications:

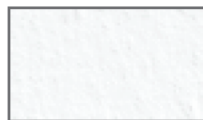
The whole range of Conqueror papers, text and boards give excellent printing results with all major print processes. These include: Design and pre-press, Offset litho printing, Printing inks, Paper handling, Sealers and coatings, Varnishing, Screen printing, Blind embossing, Hot foil stamping, Die Stamping, Thermography, Film laminating, Die and laser cutting, Folding and creasing, Binding and adhesives, Office printing, Digital technologies,



COLOR	SIZES	WEIGHTS (GSM)
CX22 Unwatermarked		
Diamond White (Unwatermarked)	(SRA2) 17 3/4" x 25 1/4", 34" x 22", (B1) 27 1/2" x 39 3/8"	90
High White (Unwatermarked)	(B1) 27 1/2" x 39 3/8"	100
Oyster (Unwatermarked)	(B1) 27 1/2" x 39 3/8"	250
Cream (Unwatermarked)	(B1) 27 1/2" x 39 3/8"	120, 250, 320
Ultra White (Unwatermarked)	(B1) 27 1/2" x 39 3/8"	250
CX22 Envelopes		
Diamond White Envelopes	(B1) 27 1/2" x 39 3/8"	90



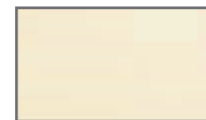
Diamond White



High White



Oyster



Cream



Ultra White



Conqueror : Laid Watermarked

Produced to exacting standards since 1888, Conqueror's range of everyday essentials, available in whites, creams and now a suite of greys, are a staple of brand identities worldwide.

Laid

Conqueror Laid, with its traditional ribbed texture originally created to guide handwriting, remains a timeless favourite for stationery and print. The three new shades of grey complement the existing range of whites, creams and black.

Applications:

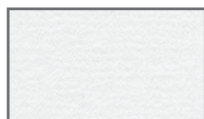
The whole range of Conqueror papers, text and boards give excellent printing results with all major print processes. These include: Design and pre-press, Offset litho printing, Printing inks, Paper handling, Sealers and coatings, Varnishing, Screen printing, Blind embossing, Hot foil stamping, Die Stamping, Thermography, Film laminating, Die and laser cutting, Folding and creasing, Binding and adhesives, Office printing, Digital technologies,



COLOR	SIZES	WEIGHTS (GSM)
Laid Watermarked		
Diamond White	8 1/2" x 11" & 8 1/2" x 13", (A4) 210mm x 297mm, (SRA2) 17 3/4" x 25 1/4", 34" x 22"	90
Ultra White	8 1/2" x 11" & 8 1/2" x 13", (A4) 210mm x 297mm, (RA2) 16 7/8" x 24", (SRA2) 17 3/4" x 25 1/4", 34" x 22"	90, 100
High White	8 1/2" x 11" & 8 1/2" x 13", 34" x 22"	90
Ivory	8 1/2" x 11" & 8 1/2" x 13", (A4) 210mm x 297mm, (SRA2) 17 3/4" x 25 1/4", 34" x 22"	90
Vellum	8 1/2" x 11" & 8 1/2" x 13", 34" x 22"	90
Oyster	B1) 27 1/2" x 39 3/8"	120



Diamond White



Ultra White



High White



Ivory



Vellum



Pearl



Conqueror : Laid Unwatermarked

Produced to exacting standards since 1888, Conqueror's range of everyday essentials, available in whites, creams and now a suite of greys, are a staple of brand identities worldwide.

Laid

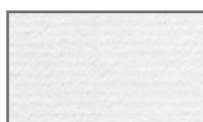
Conqueror Laid, with its traditional ribbed texture originally created to guide handwriting, remains a timeless favourite for stationery and print. The three new shades of grey complement the existing range of whites, creams and black.

Applications:

The whole range of Conqueror papers, text and boards give excellent printing results with all major print processes. These include: Design and pre-press, Offset litho printing, Printing inks, Paper handling, Sealers and coatings, Varnishing, Screen printing, Blind embossing, Hot foil stamping, Die Stamping, Thermography, Film laminating, Die and laser cutting, Folding and creasing, Binding and adhesives, Office printing, Digital technologies,



COLOR	SIZES	WEIGHTS (GSM)
Laid Unwatermarked		
Diamond White	B1) 27 1/2" x 39 3/8"	220
Ultra White	B1) 27 1/2" x 39 3/8"	180, 220, 300
High White	B1) 27 1/2" x 39 3/8"	220
Ivory	B1) 27 1/2" x 39 3/8"	220
Vellum	B1) 27 1/2" x 39 3/8"	220
Pearl	B1) 27 1/2" x 39 3/8"	220
Laid Envelopes		
Ultra White	(#10) 4 1/8" x 9 1/2"	90
High White	(#10) 4 1/8" x 9 1/2"	90
Ivory	(#10) 4 1/8" x 9 1/2"	90
Vellum	(#10) 4 1/8" x 9 1/2"	90



Diamond White



Ultra White



High White



Ivory



Vellum



Pearl



Conqueror : Iridescent

Produced to exacting standards since 1888, Conqueror's range of everyday essentials, available in whites, creams and now a suite of greys, are a staple of brand identities worldwide.

Iridescent

The Iridescent range is a unique line-up of papers. What at first appears to be a white sheet assumes a completely different look when hit by light. There's a hint of sparkle, and a blush of colour - though not enough to detract from what's on the page.

Applications:

The whole range of Conqueror papers, text and boards give excellent printing results with all major print processes. These include: Design and pre-press, Offset litho printing, Printing inks, Paper handling, Sealers and coatings, Varnishing, Screen printing, Blind embossing, Hot foil stamping, Die Stamping, Thermography, Film laminating, Die and laser cutting, Folding and creasing, Binding and adhesives, Office printing, Digital technologies,



COLOR	SIZES	WEIGHTS (GSM)
Iridescent		
Gold Dust	17 3/4" x 25 1/4", 27 1/2" x 39 3/8"	100, 120
Golden Haze	17 3/4" x 25 1/4", 27 1/2" x 39 3/8"	100, 120
Silica Blue	17 3/4" x 25 1/4", 27 1/2" x 39 3/8"	100, 120
Silver Mist	17 3/4" x 25 1/4", 27 1/2" x 39 3/8"	100, 120
Iridescent Board		
Gold Dust	27 1/2" x 39 3/8"	160, 250
Golden Haze	27 1/2" x 39 3/8"	160, 250
Silica Blue	27 1/2" x 39 3/8"	160, 250
Silver Mist	27 1/2" x 39 3/8"	160, 250



Gold Dust



Golden Haze



Silica Blue



Silver Mist